

WEIGHING ELECTRONICS

For the connection of 1 or 2 scale platforms with a max. of 16 analog loadcells in 4- or 6-wire mode, W&M approved resolution of up to 6000d at a max. of 80% preload, internal resolution 524,000d, update rate selectable 50 - 800 updates / second, smallest loadcell signal 0.33V/e. Optional switching and summing function.

Option: connection of scale platforms with digital force transducers.

Option: up to 6 external scale interfaces via ADCBox.

CALIBRATION

Setup as single or multiple-range scale with 1, 2 or 3 ranges or as multi-interval scale. Calibration with test weights or through entry of rated output of loadcell(s), option for the linearization of the load curve with up to 6 linearization points. Option to connect incline switch.

ELECTRICAL CONNECTION

110 (-15%) to 240 (+10%)VAC, 50/60Hz via integrated power supply, option: 12 - 30VDC, power consumption max. 20VA.

OPERATING TEMPERATURE

- 10°C to + 40°C, 95% relative humidity, non-condensing.

DISPLAY AND KEYBOARD

Bright, high-contrast 5.7" TFT color display, 320 x 240 pixel, with wide viewing angel, large weight display and 4 to 8 input lines.

Programmable soft keys, alphanumeric keyboard, function keys for zero setting and taring, plus application-specific function keys, connection of optional full-size keyboard via USB (cable or Bluetooth)

SERIAL INTERFACES

Up to 4 interfaces, selectable RS232, 20mA CL (passive), RS422 or RS485 for printer, precision scales, remote displays, other peripheral devices and host communication.

PARALLEL AND ANALOG I/O

Up to 8 internal optoisolated inputs and outputs, 24VDC, or external relay / transistor module (64 inputs, 64 outputs max.). Internal 15-bit analog output, external module for up to 4 analog inputs / outputs as option.

FIELD BUS INTERFACES

Ethernet/IP, Profibus DP 12Mbps, Profinet or Modbus TCP.

ETHERNET INTERFACE

10/100BASE-T Ethernet interface with integrated web server, WLAN as option.

USB

USB 2.0 host interface with optional IP67 connector for PC keyboard, scanner or USB stick.

SECURITY

Powerfail safe storage of data, password protection, battery-backed realtime clock, remote diagnosis over Ethernet / Internet possible.

CPU / OPERATING SYSTEM

32-bit ARM processor, 266MHz, 1.5MB data memory, expandable. Linux based realtime multitasking operating system.

FREE PROGRAMMABILITY

Comprehensive, PC-based program development and test environment. Programming with RTC WIN in 'C' in compliance with WELMEC software guidelines. Complete software development and test / simulation possible on PC.

OPTIONS

RTC WIN - IT8000E programming environment.

PC COM+ - Active X component for the communication with PC programs.

Ex2/22 version - for installation in Ex zones 2 and 22.

Construction/options:

Desk/wall version



- Stainless steel housing, IP69K
- for desk-top or wall-mount installation or with optional column for floor mounting
- Dimension WxHxD: 330x229x134mm

Panel-mount version



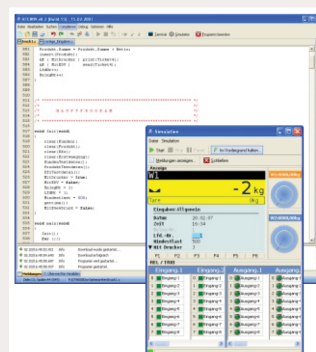
- Stainless steel housing fascia plate protected to IP65
- Panel-mount installation
- Dimension WxHxD: 285x224x69mm
- Cutout in panel: 268x207mm

WLAN



- Option: WLX module to connect to WLAN networks (802.11b/g)
- Secure encryption selectable

RTC WIN



Directives: 2009/23/EC, 2004/108/EC, 2006/95/EC, 2004/22/EC

Standards: EN 45501, OIML R76-1, EN 61000-6-2, EN 61000-6-3, NAMUR NE21, EN 60950, OIML R51, OIML R61, OIML R107



EC approval as non-automatic weighing instrument, MID-approval as AGFI, checkweigher, automatic catchweighing instrument, weigh labeler, weigh-price labeler, discontinuous totalizer



NTEP approval as indicating element



ETL certified in accordance with UL 60950-1 and CSA C22.2 No. 60950-1



EMI compliance with FCC Part 15



Mesures Canada: Approval as non automatic weighing instrument



Ukraine: Approval as non-automatic weighing instrument

