

SUPERIOR PERFORMANCE

RAD elevator buckets are designed, constructed and assembled with top quality components that you can trust. Every system is reliable and our specifications are honestly rated to give you maximum throughput while maintaining grain integrity, ensuring the most efficient operation.

EASE OF MAINTENANCE

RAD's design team understands that accessibility of components during maintenance is paramount. Standard models are designed with maintenance in mind. A customizable design is available for plans and installations that require particular applications.

EFFICIENCY

RAD bucket elevators are designed for performance and strength to provide years of reliable service. They offer the added value that your operation demands.



STANDARD FEATURES:

- Corrosion-resistant galvanized steel elevator
- Sturdy and made to last
- Pre-assembled drive and service platform for easier installation
- Wide selection of distributor heads adapted to your project
- 150 to 15,000 bushels per hour (BPH)



RAD ELEVATOR HEAD:

- 3D Designed and CNC manufactured
- 10-16 ga galvanized steel
- Inspection door on each side
- Dust protection at shaft opening
- Easily accessible hood
- Abrasion-resistant composite coating (Rhino) available upon request
- Dodge brand drive and bearings with backstop included



RAD ELEVATOR LEG:

- 3D Designed and CNC manufactured
- 10-14 ga galvanized steel
- Leg with Inspection door
- PVG belt included, rubber model available
- Poly bucket made to last



RAD ELEVATOR BOOT:

- 3D Designed and CNC manufactured
- 8-14 ga galvanized steel
- Heavy duty roller bearings
- Belt tensioner that improves belt traction and service life
- Dust protection at shaft opening
- Self cleaning boot available
- Drawer on boot for easy cleaning

SUPERIOR PERFORMANCE

RAD elevator buckets are designed, constructed and assembled with top quality components that you can trust. **Every system is reliable and our specifications are honestly rated to give you maximum throughput while maintaining grain integrity, ensuring the most efficient operation.**

EASE OF MAINTENANCE

RAD's design team understands that accessibility of components during maintenance is paramount. Standard models are designed with maintenance in mind. A customizable design is available for plans and installations that require particular applications .

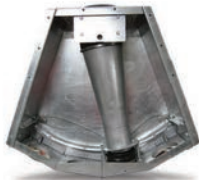
EFFICIENCY

RAD bucket elevators are designed for performance and strength to provide years of reliable service. They offer the added value that your operation demands.



RAD equipment ladders and platforms provide easy and safe access to equipment.

Several distributor service and rest platform sizes available, including access ramps and doors.



RAD DISTRIBUTION HEADS:

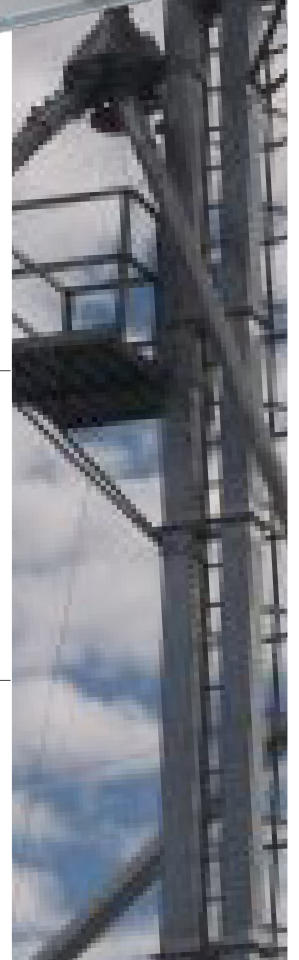
Made of galvanized steel. The sturdiness and variety of heads available make RAD a leader in its field.



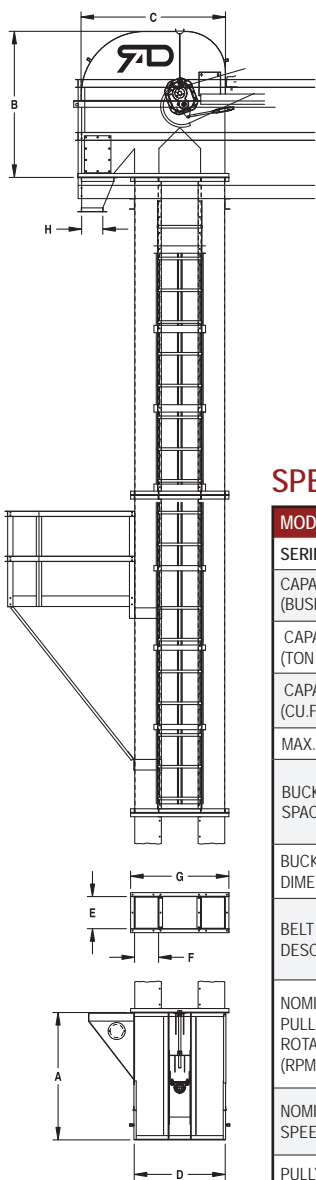
RAD SPOUTING ACCESSORIES:

RAD offers a wide range of chute accessories to meet most specific needs.

- 2 or 3 way valves
- In-line decelerator cushion box
- Galvanized tube
- Transitions and several others



DIMENSIONS:



	A	B	C	D	E	F	G	H
MINI	24"	28-5/8"	26-1/8"	16-3/4"	6-3/4"	6"	18-7/8"	6"
JUNIOR	36"	43-1/8"	43"	26-1/4"	9"	8"	29"	6"
SENIOR	48"	55-1/4"	54-1/8"	34-3/8"	12"	9"	37-1/8"	8"-10"
SUPER	60"	69-1/2"	59-7/8"	40-1/4"	12"	9"	42-7/8"	8"-10"
JUMBO	60"	73"	69"	46-3/8"	14"	12"	50"	8"-10"
MAXI	60"	78-1/8"	77"	52-3/8"	16"	12"	56-1/8"	10"-12"
MEGA	60"	89-1/8"	90"	58-1/2"	18"	12"	62-1/8"	12"-14"
ULTRA	72"	116-3/4"	105"	69-1/2"	22"	14"	74"	14"-16"

SPECIFICATIONS: (INCHES)

MODEL	MINI			JUNIOR				SENIOR			SUPER			JUMBO		MAXI			MEGA			ULTRA			
	1	2	3	1	2	3	4	1	2	3	1	2	3	1	2	1	2	3	1	2	3	1	2	3	
CAPACITY (BUSHEL / HR)	150	300	600	600	900	1200	1500	2400	3000	3500	2400	3000	3500	4000	5000	5000	6000	7000	8000	10000	10000	12000	15000		
CAPACITY (TON / HR)	3.8	7.6	15.3	15.3	22.9	30.5	38.2	61.1	76.4	89.1	61.1	76.4	89.1	101.8	127.3	127.3	152.7	178.2	203.6	255	255	305	382		
CAPACITY (CU.FT. / HR)	187.5	375	750	750	1125	1500	1875	3000	3750	4375	3000	3750	4375	5000	6250	6250	7500	8750	10000	12500	12500	15000	18700		
MAX. HEIGHT	62'	62'	37'	93'	93'	93'	93'	114'	114'	114'	140'	140'	140'	170'	135'	200'	185'	200'	200'	195'	221'	216'	176'		
BUCKET SPACING	6"	3"	4"	12"	8"	6"	5"	6-3/4"	5-1/4"	4-1/4"	7-1/4"	6"	5-1/4"	9-1/2"	7-1/2"	10"	8-1/2"	10"	9"	7"	12"	10"	8"		
BUCKET DIMENSIONS	4" x 3"		5" x 4"	6" x 5" H.D.				9" x 5" H.D.			9" x 5" H.D.			10" x 7" H.D.		12" x 7" H.D.			14" x 7" H.D.			16" x 8" H.D.			
BELT DESCRIPTION	PVC 120" x 5"		PVC 120" x 5-1/2"	PVG 250" x 7"				PVG 250" x 10" PVG 350" x 10"			PVG 250" x 10" PVG 350" x 10"			PVG 250" x 11" PVG 350" x 11"		PVG 350" x 13" PVG 450" x 13"			PVG 350" x 15" PVG 450" x 15"			PVG 350" x 18" PVG 450" x 18" RHINO 600 x 18"			
NOMINAL PULLEY ROTATION (RPM)	115	115	115	95	95	95	95	78	78	78	68	68	68	68	68	62	62	62	62	62	60	60	60		
NOMINAL BELT SPEED (FPM)	181	181	181	311	311	311	311	378	378	378	441	441	441	441	441	503	503	604	604	604	679	679	679		
PULLY DIAMETER	6"	6"	6"	12"	12"	12"	12"	18"	18"	18"	24"	24"	24"	24"	24"	30"	30"	36"	36"	36"	42"	42"	42"		
HEAD SHAFT DIAMETER	1"	1"	1"	1-11/16"				2-3/16"			2-15/16"			2-15/16"		2-15/16" 3-7/16" 3-15/16"			3-7/16" 3-15/16" 4-7/16"			3-7/16" 3-15/16" 4-7/16" 4-15/16" 5-7/16"			
BOOT SHAFT DIAMETER	1"	1"	1"	1-3/16"				1-11/16"			1-15/16"			1-15/16"		2-7/16"			2-15/16"			3-7/16"			
GAUGE OF HEAD & BOOT	14 ga	14 ga	14 ga	12 ga	12 ga	12 ga	12 ga	10 ga	10 ga	10 ga	10 ga	10 ga	10 ga	10 ga	10 ga	10 ga	10 ga	10 ga	10 ga	10 ga	10 ga	10 ga	10 ga	10 ga	Head: 10 ga Boot: 8 ga
GAUGE OF LEGGING	16 ga	16 ga	16 ga	16 ga	16 ga	16 ga	16 ga	14 ga	14 ga	14 ga	14 ga	14 ga	14 ga	14 ga	14 ga	14 ga	14 ga	14 ga	14 ga	14 ga	12 ga	12 ga	12 ga		