

The RC Flake and Pellet Coolers are designed for continuous flow cooling with eccentric driven baffles that prevent product bridging. A level sensor at the top of the cooler inlet activates the baffle and rotary discharge drive. Ferrell-Ross RC Coolers feature rotary vane product discharge with variable speed drive to precisely adjust material flow rate. Air flow is created by the blower and regulated via the by-pass valve to fine tune c.f.m. Inspection and clean out doors are included in the fan hood assembly. The RC Series Coolers are available with mild steel or 304 stainless steel housings.

STANDARD FEATURES:

- Mild Steel Housing
- Mild Eccentric Shafts and Baffles
- Mild Steel Hood with Inspection Door
- Stainless Steel Rotary Discharge
- Variable Speed Baffle and Discharge Drive
- Enclosed Mild Steel Drive Guard
- Indicator Level Indicator
- Exhaust Fan
- Air Valve Adjustment Lever
- Fan Motor and Drive Package with Enclosed Guard

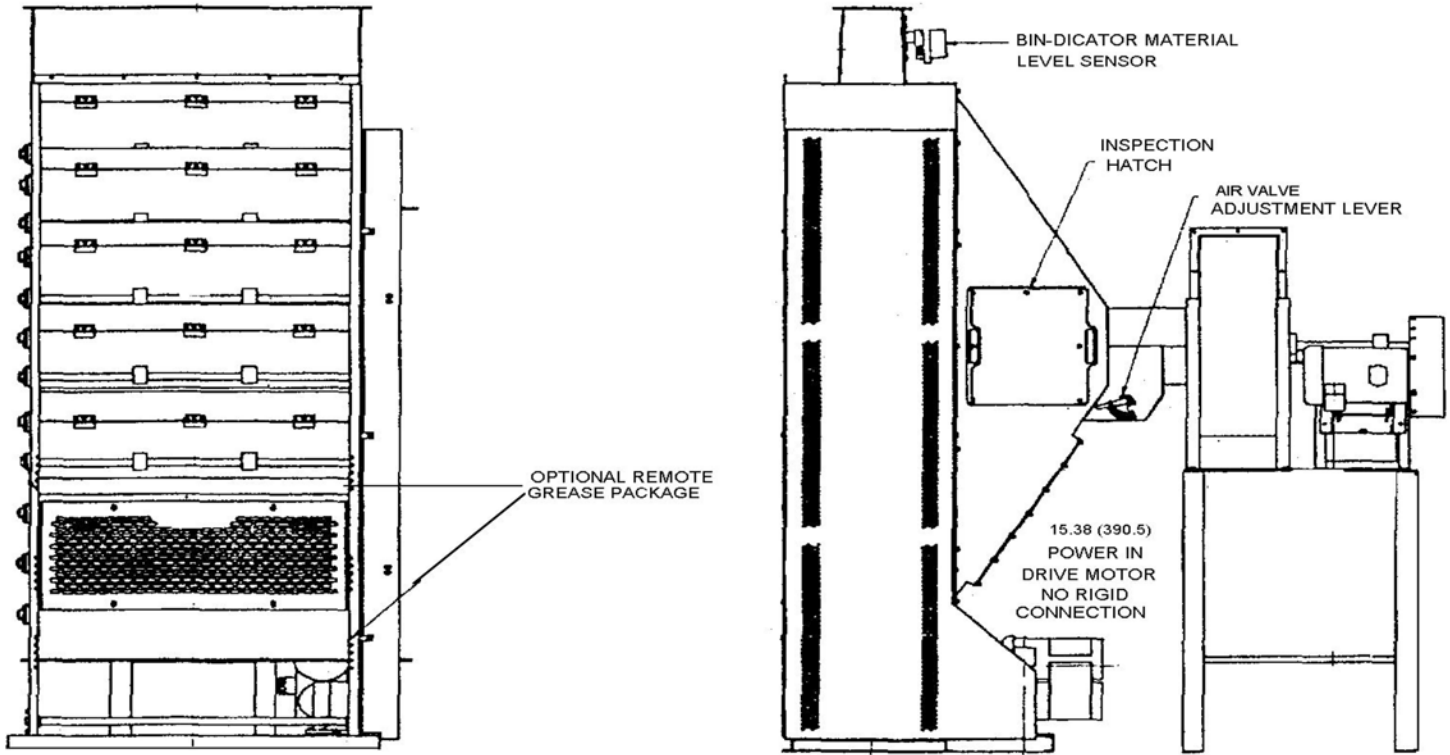
OPTIONS:

- Stainless Steel Housing
- Stainless Steel Eccentric Shafts and Baffles
- Stainless Steel Hood with Inspection Door

4450 CFM MAXIMUM AIR OUTPUT.



DIMENSIONS: (INCHES)



SPECIFICATIONS:

MODEL #	OVERALL HGT.	OVERALL WIDTH	OVERALL LENGTH	HOLDING CAP	MAX CFM	MOTORS	COOLING CAP.
RC 100	11'-0"	5'-0"	8'-6"	36 cu. ft.	4450	10HP	6-7 TPH Flaked
						1750 RPM	7-8 TPH ¼" Pellets
RC 200	14'-0"	5'-0"	10'-0"	48 cu. ft.	6000	15HP	8-9 TPH Flaked
						1750 RPM	9-10 TPH ¼" Pellets