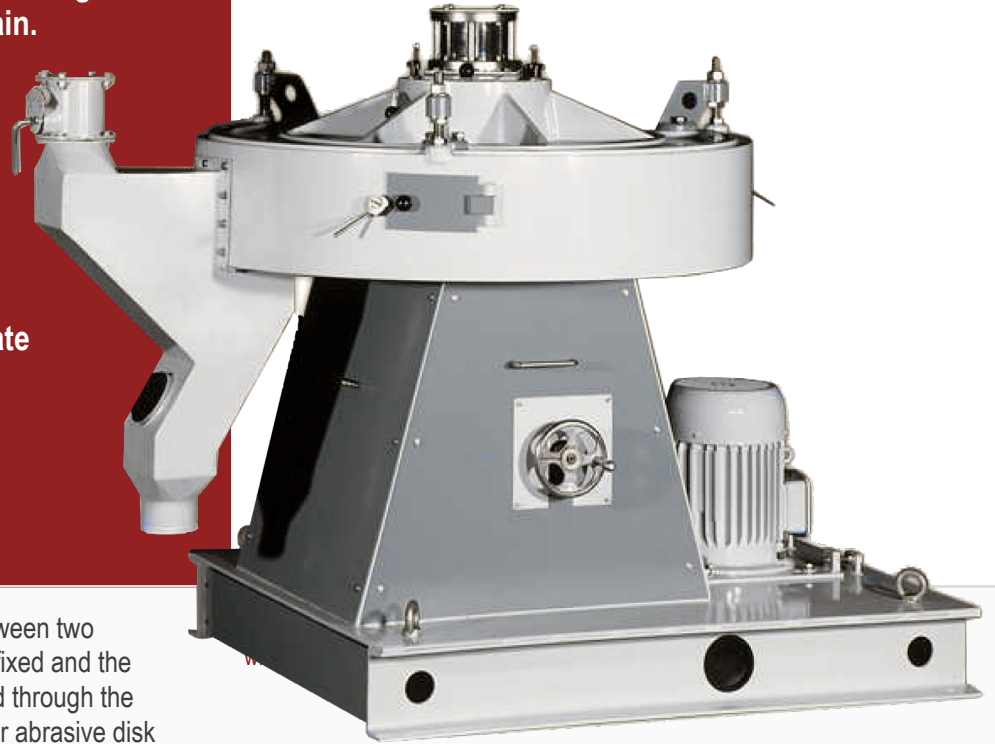


The Horizontal Dehuller used in groating plants and is applied for dehulling the buckwheat, oat and rice grain.

It works quietly and has a simple drive. The service and the inspection of the machine is exceptionally easy. Adjustable cylindrical rings at the inflow makes it possible to precisely regulate the working crevice.

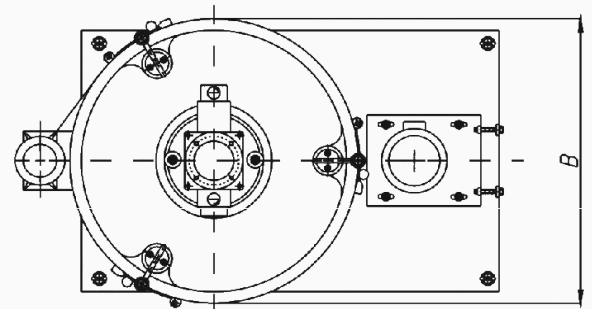
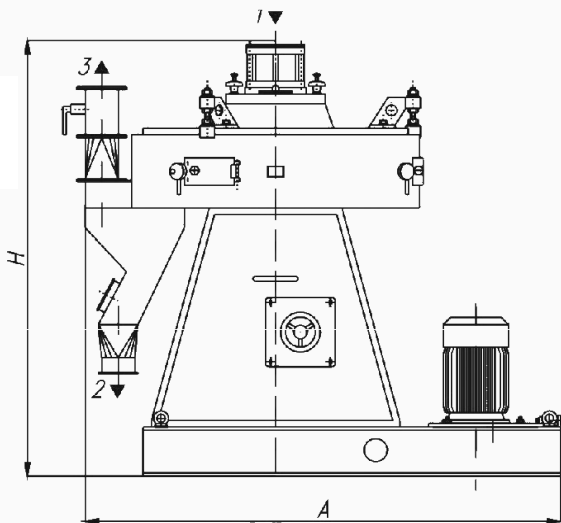


The dehulling process is carried out by friction between two horizontal abrasive disks, where the upper disk is fixed and the lower is movable. The product to be dehulled is fed through the inlet and feeding device, then it passes to the lower abrasive disk from where it is moved by centrifugal force with rotation motion to the working gap between disks, where it is dehulled.

After the mix of dehulled grain and hulls leaves the working gap, it is conveyed from the area below the lower disk to the outlet stub pipe.

The effectiveness of dehulling process can be monitored by means of the sight glass. The product, which leaves the machine through the outlet stub pipe, is blown with the air jet for the purpose of separate light bran particles from the product.

- 1 - Product Inlet
- 2 - Outlet Of Product Dehulled With Hulls
- 3 - Aspiration Air Outlet



DIMENSIONS AND WEIGHT:

	Measurement	ODB75	ODB100	OBD125
A	mm	1760	1920	2085
B	mm	870	1.120	1.370
H	mm		1.305	
Net Weight	kg.	580	800	1.100

CAPACITIES:

	Measurement	ODB75	ODB100	OBD125
Buckwheat	t/h	0,4÷0,6	0,7÷1,0	1,1÷1,4
Oats and Rice	t/h		0,7÷1,0	

The standard version Horizontal dehuller is provided with abrasive disks of the following granulation:

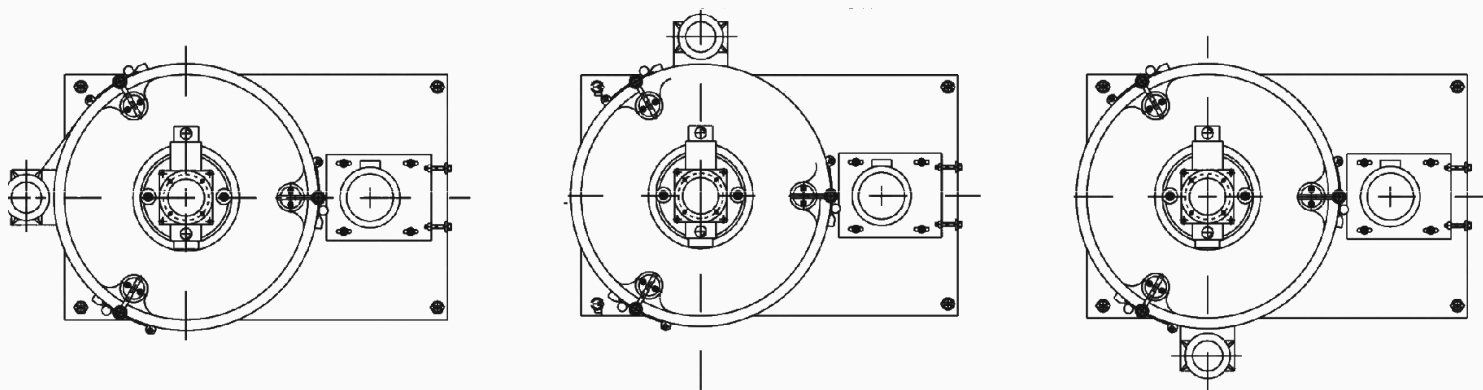
- for buckwheat A22
- for oats and rice A16

Use air separation in pneumatic channels for separating the hulls from the dehulled product.

AIR DEMAND AND POWER CONSUMPTIONS:

	Measurement	ODB75	ODB100	OBD125
Air Demand	m ³ / min	5	5	5
Resistance	pa	150	150	150
Diameter of working discs	mm	750	1.000	1.250
Disc Revolutions	rpm	290	210	160
Power	kw	2,2	3,0	4,0

VERSIONS OF ARRANGEMENT OF OUTLET WITH ASPIRATION STUB PIPE:



When ordering the bottom polar dehuller please specify the name and type, application, type of grain dehulled, grain fraction, outlet location (basic, right-hand, left-hand).