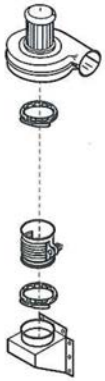


ASPIRATOR FAN

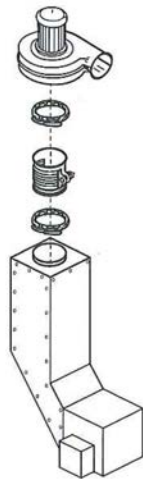
The FRL 15 Aspiration Fan improves grain quality and reduces cost.

The FRL 15 Aspiration Fan is an effective, economical way to give your grain an air wash and remove any light, unwanted foreign material like dust and bees wings (red dog). Plus, its adaptability makes it a great addition to your operation.

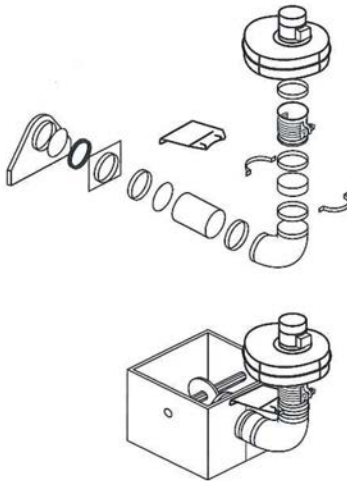
Add to it the discharge on grain dryers or place it on your head or boot of grain elevator legs ... and let it clean away!



UNIVERSAL MOUNT



M-C MOUNT

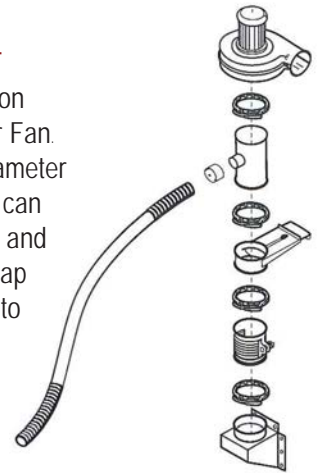


SUPER B CONVEYOR MOUNT



ADD A SUCTION KIT

You can easily add a suction Kit to the FRL-15 aspirator Fan. This allows for a 3-inch diameter hose to be added so fines can be removed or from inside and around the dryer. Simply cap the T-pipe when you want to run the unit in aspiration only mode.



BEST PRACTICE TIP:

Spread the grain out. The FLR-15 works best if the grain flowing leaving the dryer is spread out. We recommend mounting angle irons or steel rods in the dryer discharge box to help break up the column of grain. This lets more air get around the kernels so that FLR-15 Aspirator is able to draw off even more unwanted foreign materials.

