

RAD CHAIN CONVEYORS MODELS

RAD chain conveyors are high performance systems for moving your crops efficiently. We offer conveyors for all applications including; Inclined Receiving Conveyors, Round Bottom Conveyors, Double-Run Conveyors, En-Masse Conveyors and Low Profile Silo Conveyors .

BUILT TO LAST

RAD conveyors are heavy duty Galvanized construction offers with optional liners in Hardox or UHMW. All conveyors are industrial design to increased strength & durability.

MULTIPLE FEATURES

RAD conveyors offer many features to maximize your performance to reduce operation costs. High Quality bearings, Hardened teeth sprockets, Nylon paddles, Heavy duty Takes-up, HD chain, larger attachments plates, Stainless steel return rails, TGP 1045 shafts are only some of the standard features of our conveyors.

RAD Round Bottom, Drag Conveyor

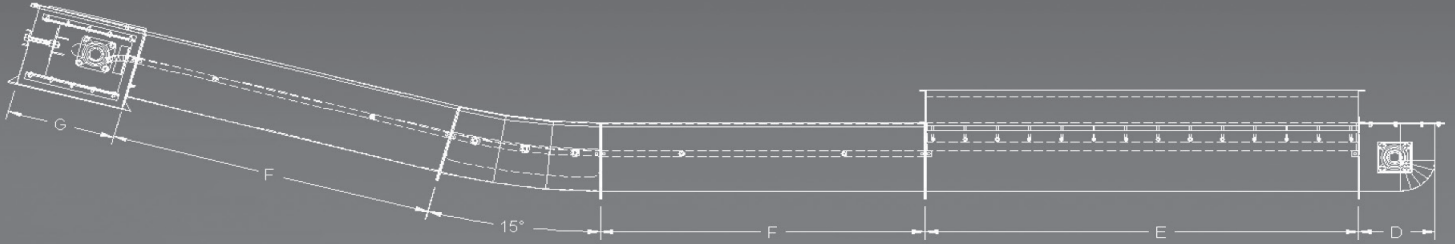


THE ROUND BOTTOM PADDLE AND CURVED BOTTOM CONVEYOR ENSURE A COMPLETE CLEANOUT, LESS GRAIN DAMAGE AND HIGH EFFICIENT OPERATION:

- High performance extra heavy-duty galvanized construction built to last
- 6" to 18" diameter conveyor
- 600 to 15,000 bushels/hour
- 15 degrees short radius inclined section available (24"-36")
- Self-cleaning hot dip galvanized Tail section 10-12ga frame, liner available
- Abrasion resistant A.R steel (Dormex) bolted wear plate available on receiving hopper
- 8-14ga pre-assembled trough section galvanized, UHMW round formed liner available.
- Head section 8-12ga housing with heavy duty chain tension take-up system, shaft up to 3-15/16"
- Double chain system available on the 18" conveyor
- Heavy duty cast sprocket
- Heavy-duty pillow block Dodge bearings with turned ground and polished shaft.
- Dust and weather tight, maintenance friendly

- Highly resistant 12ga type 304 stainless steel return rail
- UHMW paddle reducing friction with no metal-to-metal contact
- Each UHMW paddle is bolted to a formed steel backer plate welded onto the chain
- 81X and 81XH roller welded chain is engineered for durability, reliability and longevity. Solid bushing, solid roller and quad staked riveting.
- Dodge belt speed gear reducer standard.

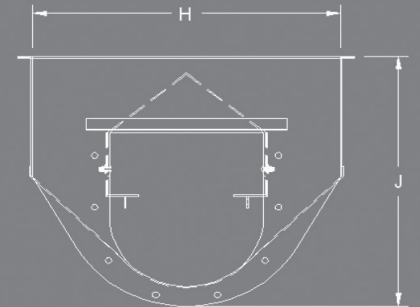




DIMENSIONS *

MODEL	A	B	C	D	E	F	G	H	J	K
6"	7"	8-1/8"	9 3/8"	9 3/8"	96"	5',6',10',12'	18"	24"	16"	10"
9"	10"	11-1/4"	12 3/4"	12-1/2"	96"	5',6',10',12'	18-1/8"	24"	18"	12"
12"	13"	14-3/8"	16 3/8"	16-1/2"	96"	5',6',10',12'	21"	30"	22-1/8"	14"
14"	15"	16-7/8"	18 7/8"	19"	96"	5',6',10',12'	24"	30"	27-1/8"	16"
16"	17"	19"-1/4"	21 1/4"	21 3/8"	96"	5',6',10',12'	24"	36"	30"	16"
18"	19"	21-1/2"	24 1/4"	24 3/8"	96"	5',6',10',12'	29"	36"	34"	20"

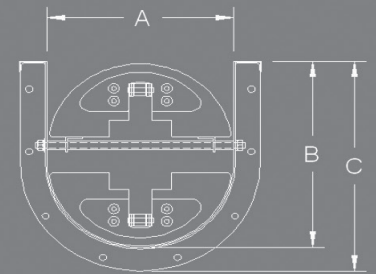
* Dimensions and specifications are subject to change without notice.



SPECIFICATIONS **

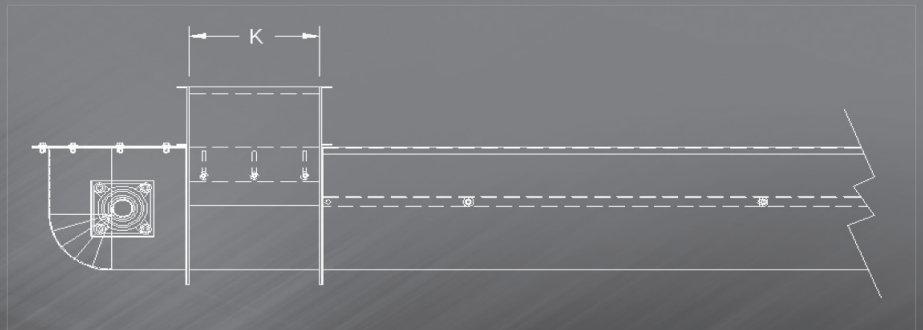
	6"	9"	12"	14"	16"	18"
Tail	12ga	12ga	10ga	10ga	10ga	10ga
Divided inlet	12ga	12ga	10ga	10ga	10ga	10ga
Trough section	10-14ga	10-14ga	10-12ga	10-12ga	10-12ga	8-12ga
Head	12ga	12ga	10ga	8ga	8ga	8ga
Receiving hopper	10ga	10ga	10ga	10ga	10ga	8ga
Chain	CA550	81X	81X or 81XH	81X or 81XH	81X or 81XH	81XH
Chain sprocket	10 teeth	9 teeth	12 teeth	14 teeth	16 teeth	16 teeth
Paddle thickness	3/8"	3/8"	3/8"	3/8"	1/2"	1/2"

** Other specifications available on request.



CAPACITIES

	RPM	BU/HR	FT ³ /HR
6" @ 85 ft/min	62	600	750
6" @ 128 ft/min	92	900	1125
6" @ 170 ft/min	123	1200	1500
9" @ 83 ft/min	47	1200	1500
9" @ 104 ft/min	58	1500	1875
9" @ 167 ft/min	93	2400	3000
12" @ 99 ft/min	37	2400	3000
12" @ 123 ft/min	47	3000	3750
12" @ 147 ft/min	56	3500	4375
14" @ 113 ft/min	37	3500	4375
14" @ 123 ft/min	40	4000	5000
14" @ 154 ft/min	50	5000	6250
16" @ 126 ft/min	36	5000	6250
16" @ 147 ft/min	42	6000	7500
16" @ 170 ft/min	49	7000	8750
18" @ 121 ft/min	35	7000	8750
18" @ 138 ft/min	40	8000	10000
18" @ 173 ft/min	49	10000	12500



The capacities shown are for horizontal conveyors transporting free-flowing dry material at 45lb./cu or 56lb./bu. Maximum inclination for Round drag conveyor is 15 degrees. Capacities may vary based on the conveyor's degree of inclination and the material being transported.