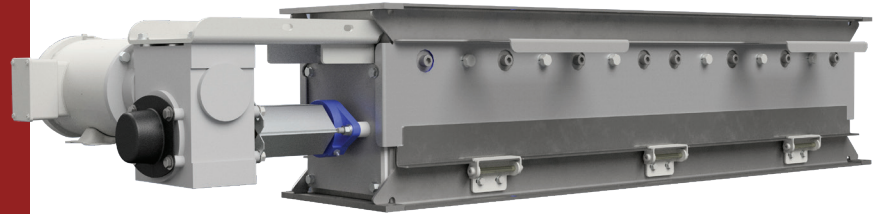


The Ferrell-Ross Granulizer reduces the clumping of cracked material in an Oil Seed Flaking Process.



STANDARD FEATURES:

- Heavy Duty Mild Steel Housing with Flange Designed to Mount Directly to Roll Feeder
- Full Length Stainless Steel Shaft Studded with Stainless Steel Pins in a Spiral Design
- Individually Replaceable Stainless Steel Lump Reducing Grates Front and Rear Access Doors for Easy Cleanout
- Gear Box Drive / LH or RH Drive

OPTIONS:

- 1.5 HP Drive Motor

